

19 July 2019

Dear Resident,

We are writing to inform you of two separate items of works that will be starting from Monday 22 July 2019.

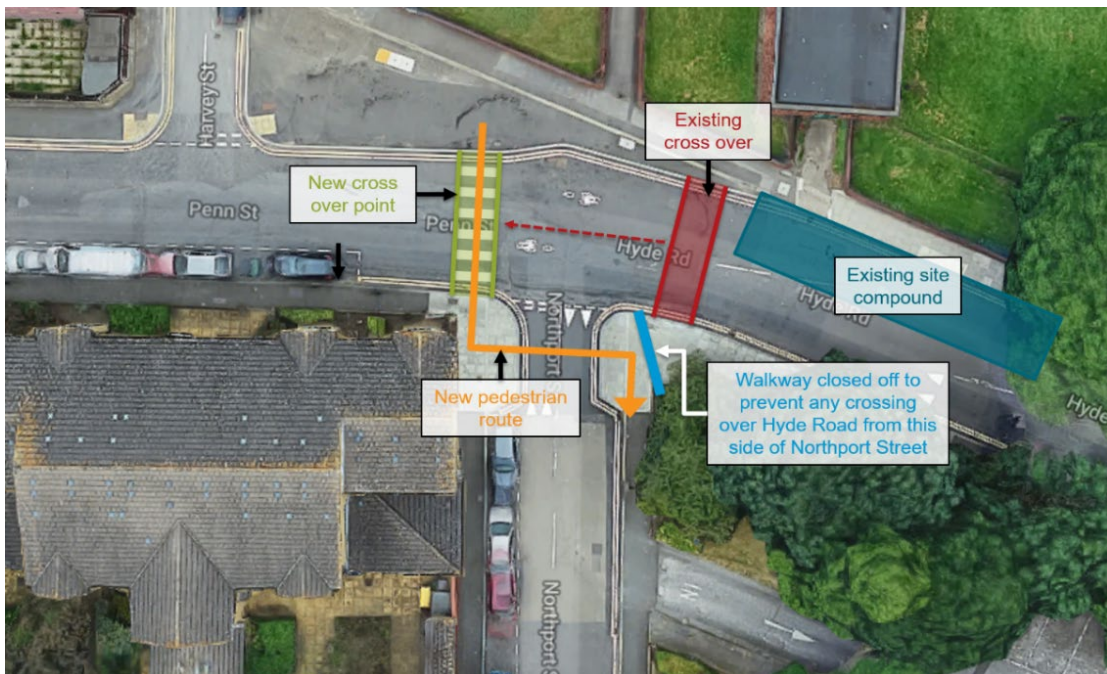
What is happening?

Item 1

We will be temporarily changing the location of the zebra crossing on Hyde Road and move it to the corner of Penn Street to allow us to continue the district heating works.

Hyde Road will remain open as normal and we will continue to have our traffic marshals to manage the crossing to ensure pedestrians and vulnerable road users are helped in crossing the road. Once we have completed that section of the district heating works, which will take one week to do, we will then put back the zebra crossing to its original location, on Monday 29 July. These works have been agreed by London Borough of Hackney Streetscene team.

I have added some images and an aerial view to show the temporary relocation of the crossing points (see below images).



Item 2

We will be starting the next section of the district heating works, this time we will be working within the playground/car parking area of Shoreditch Park Primary School (see image below).

The works will commence from Monday 22 July for a period of four weeks and our working hours will be 08.00 – 18.00 Monday – Friday and Saturdays 08.00 – 13.00, however we will try to avoid working on Saturdays where possible.


During these works Northport Street and Gopsall street will remain open as usual however we will have some construction vehicles delivering materials and machinery to the school via Northport Street and Gopsall street. All our vehicles will be marshalled by our traffic marshals as per the traffic management plan and we will continue to ensure pedestrians and vulnerable road users are helped in crossing the road.

The works will involve digging up the road within the school playground/car park area to allow us to install the utility services, these works will be noisy however we will ensure it is kept to a minimum as best we can. These works are being done slightly out of sequence to the main district heating works to ensure the works are carried out during the school holidays and minimise disruption and the inconvenience for the children and teachers of Shoreditch Park Primary School.



We sincerely apologise for any disturbance this may cause you and we will do everything possible to minimise any disruption, however if you do have any questions or concerns please do not hesitate to contact me on 07976 587 990.

Yours sincerely



Dalia Islam
Community Liaison Manager